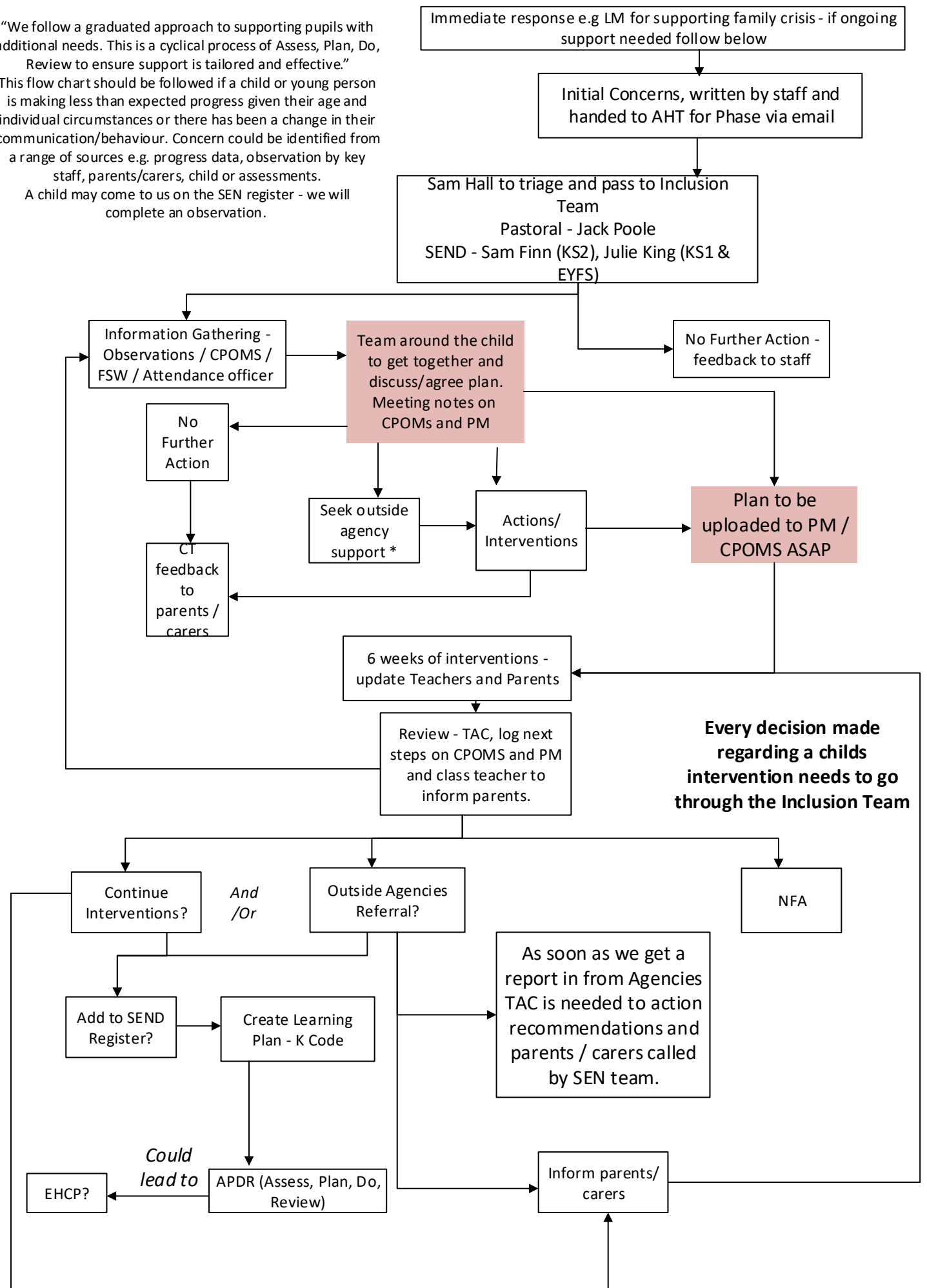


“We follow a graduated approach to supporting pupils with additional needs. This is a cyclical process of Assess, Plan, Do, Review to ensure support is tailored and effective.”  
 This flow chart should be followed if a child or young person is making less than expected progress given their age and individual circumstances or there has been a change in their communication/behaviour. Concern could be identified from a range of sources e.g. progress data, observation by key staff, parents/carers, child or assessments.  
 A child may come to us on the SEN register - we will complete an observation.



\* (examples) School nurse, CCT, M. Health, Time For You, Family Support Worker, Early Help, CAP, Rise

